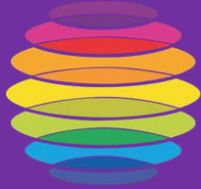




Liverpool  
City Council



**LIVERPOOL  
CITY REGION**  
COMBINED AUTHORITY

**METRO MAYOR**  
LIVERPOOL CITY REGION

# The A Lines

*“A Vision for Liverpool”*

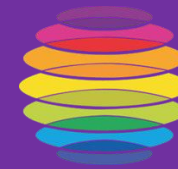
Presenter - Simon O'Brien



# Background



Liverpool  
City Council



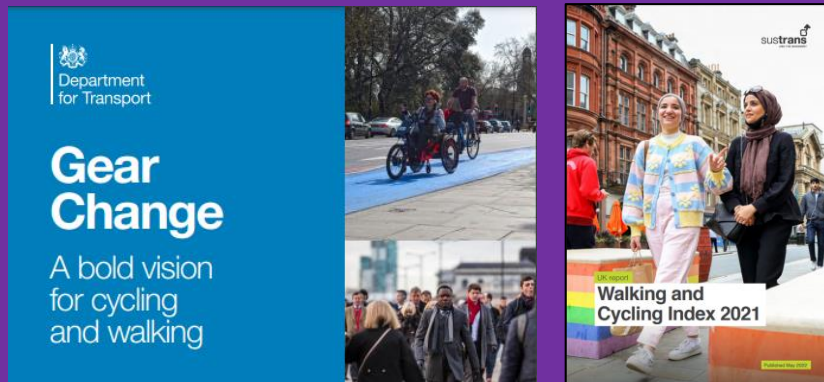
LIVERPOOL  
CITY REGION  
COMBINED AUTHORITY

METROMAYOR  
LIVERPOOL CITY REGION

**£120 million** funding to advance active travel schemes in the Liverpool City Region



**Political, local, regional  
and national alignment**



Commitment to building a comprehensive network of walking and cycling routes.

**Social**



Part of a bigger picture

*“Connecting communities to areas and opportunities that may have previously been out of reach.”* Mayor of Liverpool City Region, Steve Rotherham

**Environment**



*“I’ve long said I want to start an active travel revolution here in the Liverpool City Region – one that offers better connected, safer, green routes that will make it easier than ever for people to choose cleaner, greener ways to travel.”* Mayor of Liverpool City Region, Steve Rotherham

**Health**



*“Air pollution affects us all. Children are especially vulnerable to air pollution. All this is exacerbated by poverty and inequalities. Families are priced out of giving their children a healthy start.”*

*Professor Ian Sinha, Consultant Respiratory Paediatrician Alder Hey Children’s Hospital*

**Economy**



*“We have to make health, easy (accessible and affordable). Nothing has the reach that transport has. Enabling self propelled journeys is the single biggest health intervention a council can make. Every £1 invested returns £3.50 in health benefits alone arising from reductions in mortality and reduced absenteeism from work. This becomes £4.30 to £1 if climate change, air pollution and other factors are taken into consideration.”* Chris Boardman, National Active Travel Commissioner for Active Travel England

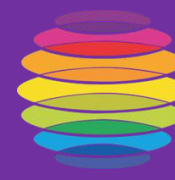
A vision & strategy to provide world class facilities for all forms of active travel, creating a city for the people.



# Continuing Our Journey



Liverpool  
City Council



LIVERPOOL  
CITY REGION  
COMBINED AUTHORITY

METRO MAYOR  
LIVERPOOL CITY REGION

*“For far too long, many in our region have been forced to contend with a fragmented, under-funded public transport system that doesn’t offer them what they deserve - a quality alternative to the car – we’re putting that right.*

*I want to start an active travel revolution here in the Liverpool City Region – one that offers better connected, green routes that will make it easier than ever for people to choose cleaner ways to travel”.*

Steve Rotheram - Mayor of the Liverpool City Region

We have started to deliver our vision with some excellent examples of high-quality, innovative, inclusive and world class cycle infrastructure... but we need to go further.



Princes Avenue



The Strand



Park Lane



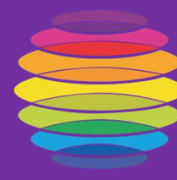
Kingsley Road

*“Make our region a worldwide centre of excellence.”*

Steve Rotheram COP26 Glasgow



Liverpool  
City Council



**LIVERPOOL  
CITY REGION**  
COMBINED AUTHORITY

**METRO MAYOR**  
LIVERPOOL CITY REGION

# A Vision For Liverpool

“Well connected city made for people”

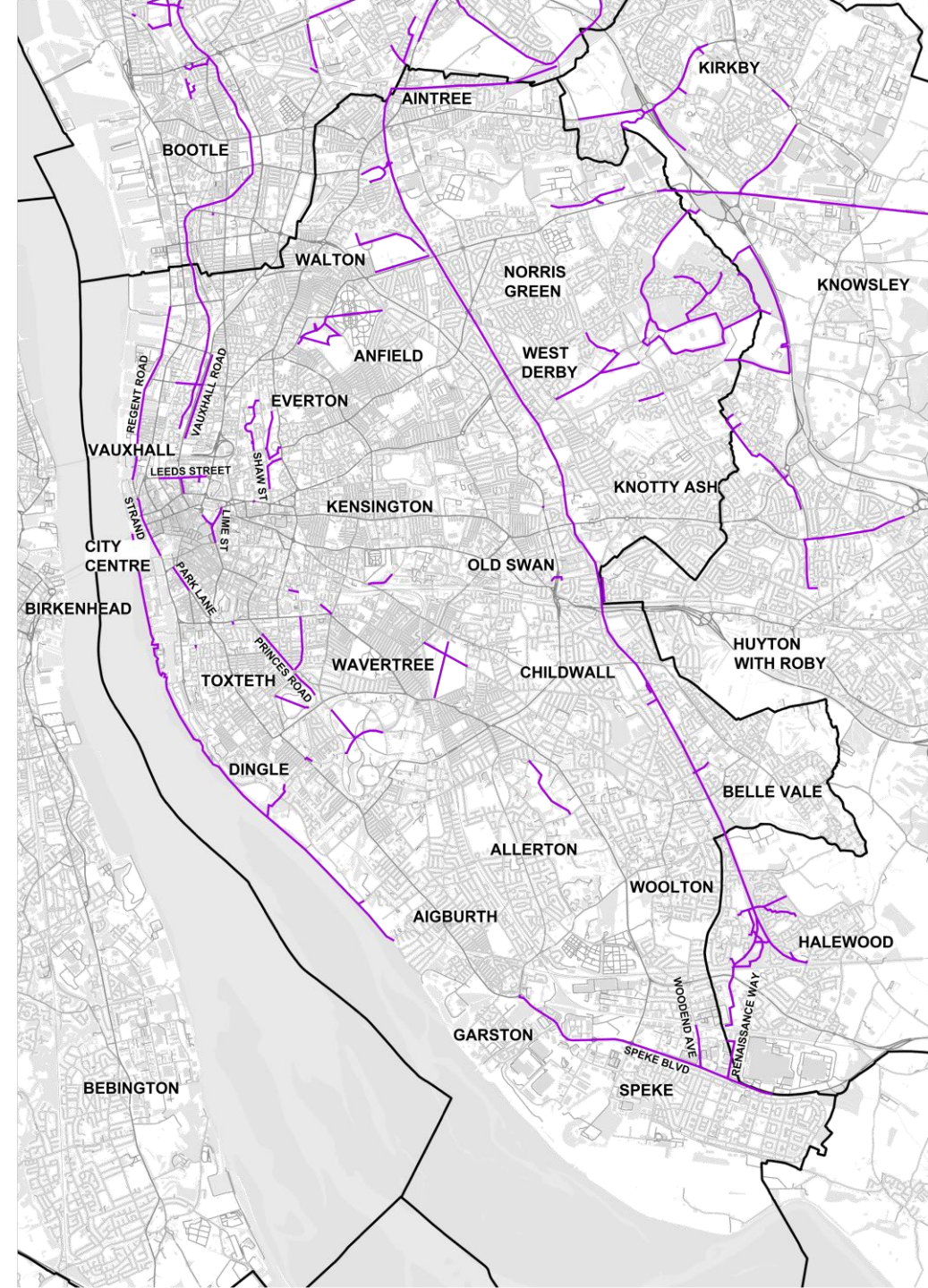


# Existing Cycle Network

90km of existing high-quality cycle infrastructure

## KEY

EXISTING TRAFFIC FREE AND  
SEGREGATED CYCLE ROUTES



Liverpool  
City Council



LIVERPOOL  
CITY REGION  
COMBINED AUTHORITY

METROMAYOR  
LIVERPOOL CITY REGION



# Key Interest Points

## KEY

EXISTING TRAFFIC FREE AND  
SEGREGATED CYCLE ROUTES

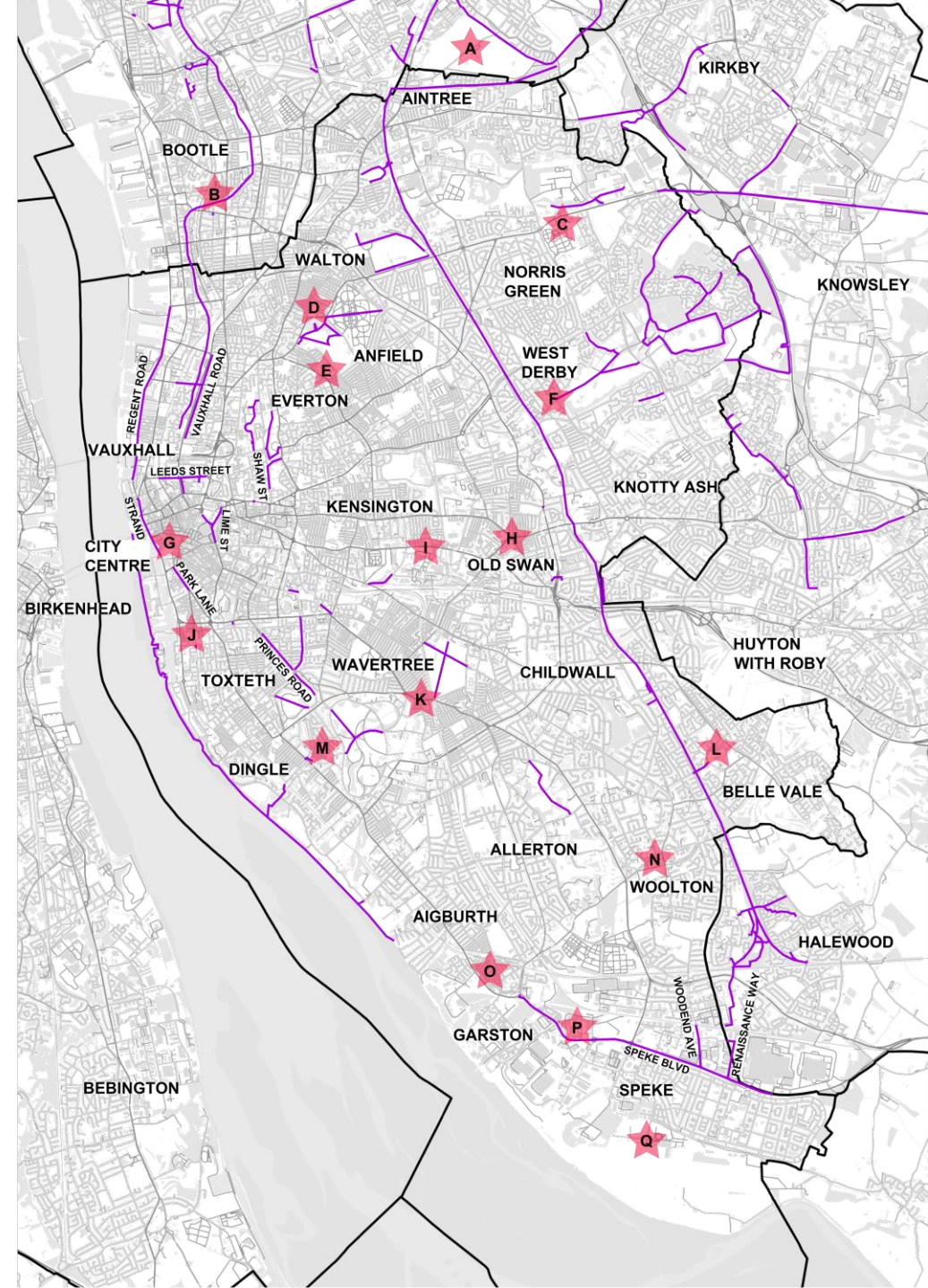
EXAMPLE OF KEY INTEREST  
POINTS



## EXAMPLE OF KEY INTEREST POINTS



- A. AINTREE RACECOURSE
- B. BOOTLE NEW STRAND
- C. STONEDALE RETAIL PARK
- D. GOODISON PARK
- E. ANFIELD
- F. WEST DERBY VILLAGE
- G. LIVERPOOL ONE
- H. OLD SWAN
- I. EDGE LANE
- J. BALTIC TRIANGLE
- K. ALLERTON & SMITHDOWN
- L. BELLE VALE SHOPPING CENTRE
- M. LARK LANE
- N. WOOLTON VILLAGE
- O. GARSTON
- P. NEW MERSEY RETAIL PARK
- Q. JOHN LENNON AIRPORT



Liverpool  
City Council



LIVERPOOL  
CITY REGION  
COMBINED AUTHORITY

METROMAYOR  
LIVERPOOL CITY REGION



# Cycle to Work Hot Spot Areas

## KEY

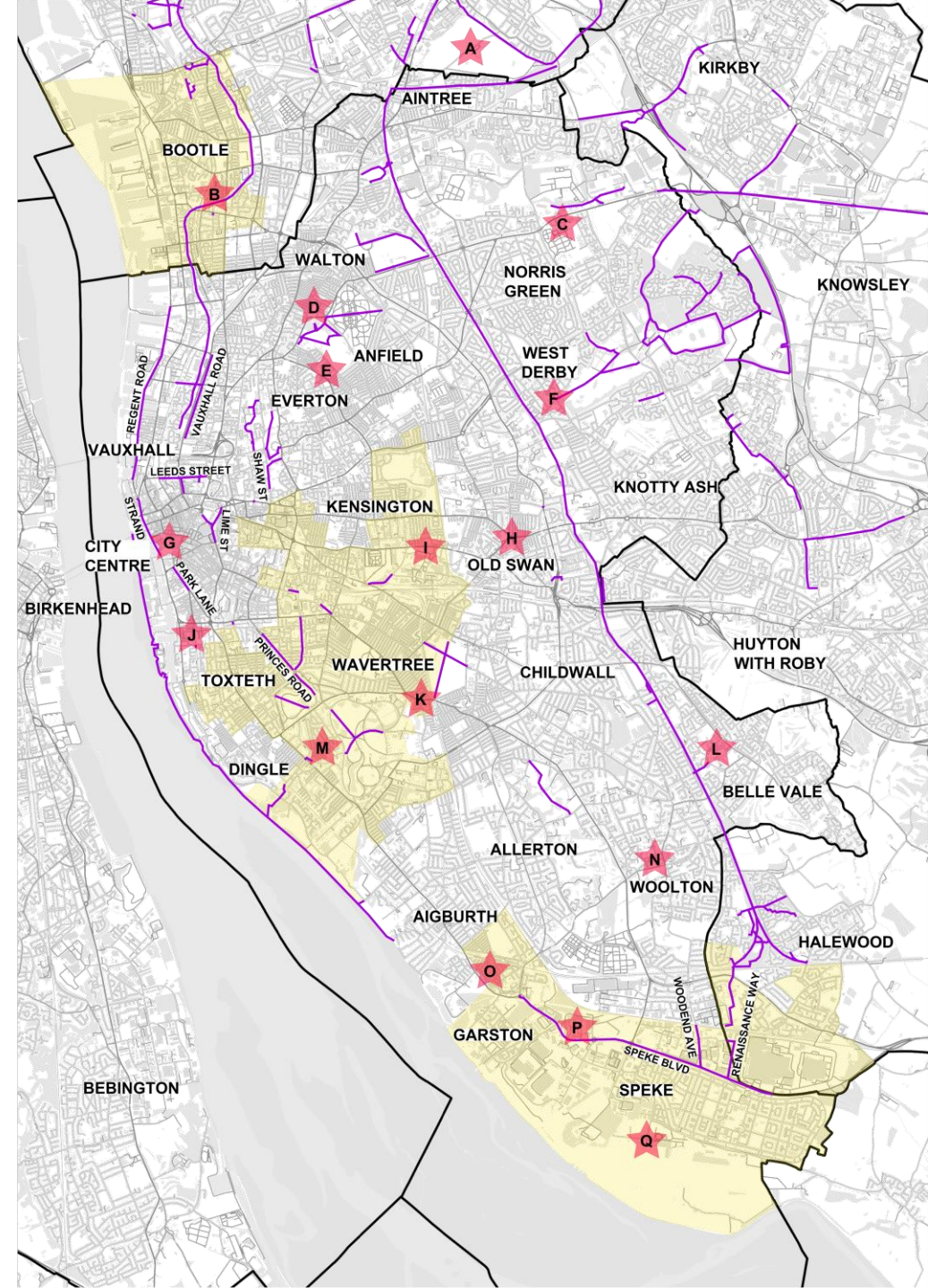
EXISTING TRAFFIC FREE AND  
SEGREGATED CYCLE ROUTES

EXAMPLE OF KEY INTEREST  
POINTS

AREAS WHERE 3.0% OR  
HIGHER OF PEOPLE AGED 16  
AND OVER TRAVEL TO WORK  
BY BICYCLE IN 2021 CENSUS

## EXAMPLE OF KEY INTEREST POINTS

- A. AINTREE RACECOURSE
- B. BOOTLE NEW STRAND
- C. STONEDALE RETAIL PARK
- D. GOODISON PARK
- E. ANFIELD
- F. WEST DERBY VILLAGE
- G. LIVERPOOL ONE
- H. OLD SWAN
- I. EDGE LANE
- J. BALTIC TRIANGLE
- K. ALLERTON & SMITHDOWN
- L. BELLE VALE SHOPPING CENTRE
- M. LARK LANE
- N. WOOLTON VILLAGE
- O. GARSTON
- P. NEW MERSEY RETAIL PARK
- Q. JOHN LENNON AIRPORT



Liverpool  
City Council



LIVERPOOL  
CITY REGION  
COMBINED AUTHORITY

METROMAYOR  
LIVERPOOL CITY REGION



# Low Car Ownership Areas

## KEY

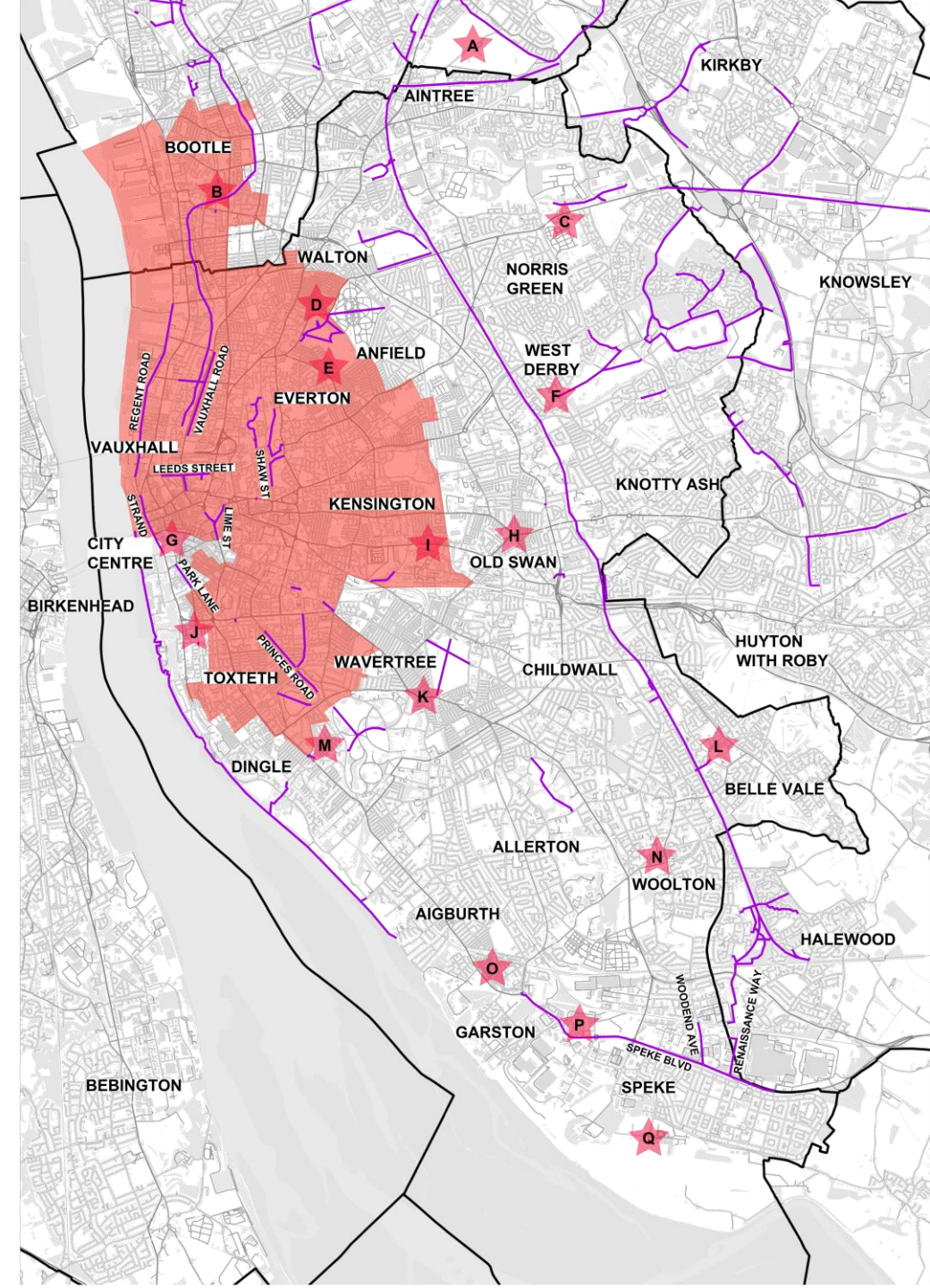
EXISTING TRAFFIC FREE AND  
SEGREGATED CYCLE ROUTES

EXAMPLE OF KEY INTEREST  
POINTS

AREAS WHERE 50.0% OR  
HIGHER OF HOUSEHOLDS  
OWN NO CARS OR VANS IN  
2021 CENSUS

## EXAMPLE OF KEY INTEREST POINTS

- A. AINTREE RACECOURSE
- B. BOOTLE NEW STRAND
- C. STONEDALE RETAIL PARK
- D. GOODISON PARK
- E. ANFIELD
- F. WEST DERBY VILLAGE
- G. LIVERPOOL ONE
- H. OLD SWAN
- I. EDGE LANE
- J. BALTIC TRIANGLE
- K. ALLERTON & SMITHDOWN
- L. BELLE VALE SHOPPING CENTRE
- M. LARK LANE
- N. WOOLTON VILLAGE
- O. GARSTON
- P. NEW MERSEY RETAIL PARK
- Q. JOHN LENNON AIRPORT



Liverpool  
City Council



LIVERPOOL  
CITY REGION  
COMBINED AUTHORITY

METROMAYOR  
LIVERPOOL CITY REGION



# Cycle to Work & Low Car Ownership

## KEY

EXISTING TRAFFIC FREE AND SEGREGATED CYCLE ROUTES

EXAMPLE OF KEY INTEREST POINTS

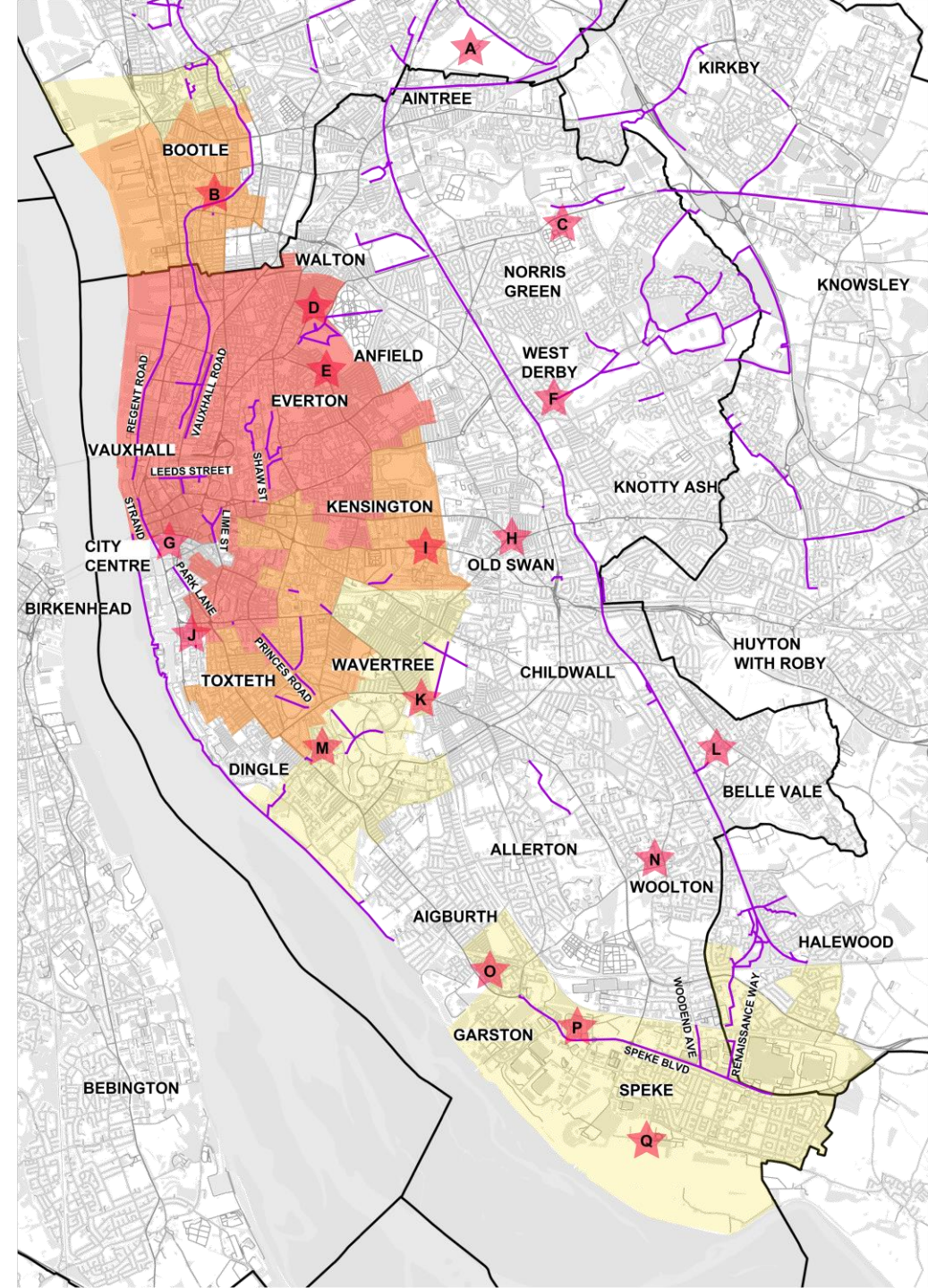
AREAS WHERE 3.0% OR HIGHER OF PEOPLE AGED 16 AND OVER TRAVEL TO WORK BY BICYCLE IN 2021 CENSUS

AREAS WHERE 50.0% OR HIGHER OF HOUSEHOLDS OWN NO CARS OR VANS IN 2021 CENSUS

AREAS OF CENSUS OVERLAP

## EXAMPLE OF KEY INTEREST POINTS

- A. AINTREE RACECOURSE
- B. BOOTLE NEW STRAND
- C. STONEDALE RETAIL PARK
- D. GOODISON PARK
- E. ANFIELD
- F. WEST DERBY VILLAGE
- G. LIVERPOOL ONE
- H. OLD SWAN
- I. EDGE LANE
- J. BALTIC TRIANGLE
- K. ALLERTON & SMITHDOWN
- L. BELLE VALE SHOPPING CENTRE
- M. LARK LANE
- N. WOOLTON VILLAGE
- O. GARSTON
- P. NEW MERSEY RETAIL PARK
- Q. JOHN LENNON AIRPORT



Liverpool  
City Council



LIVERPOOL  
CITY REGION  
COMBINED AUTHORITY

METROMAYOR  
LIVERPOOL CITY REGION



# Pipeline Schemes

22 km of pipeline schemes

## KEY

EXISTING TRAFFIC FREE AND  
SEGREGATED CYCLE ROUTES

EXAMPLE OF KEY INTEREST  
POINTS

AREAS WHERE 3.0% OR  
HIGHER OF PEOPLE AGED 16  
AND OVER TRAVEL TO WORK  
BY BICYCLE IN 2021 CENSUS

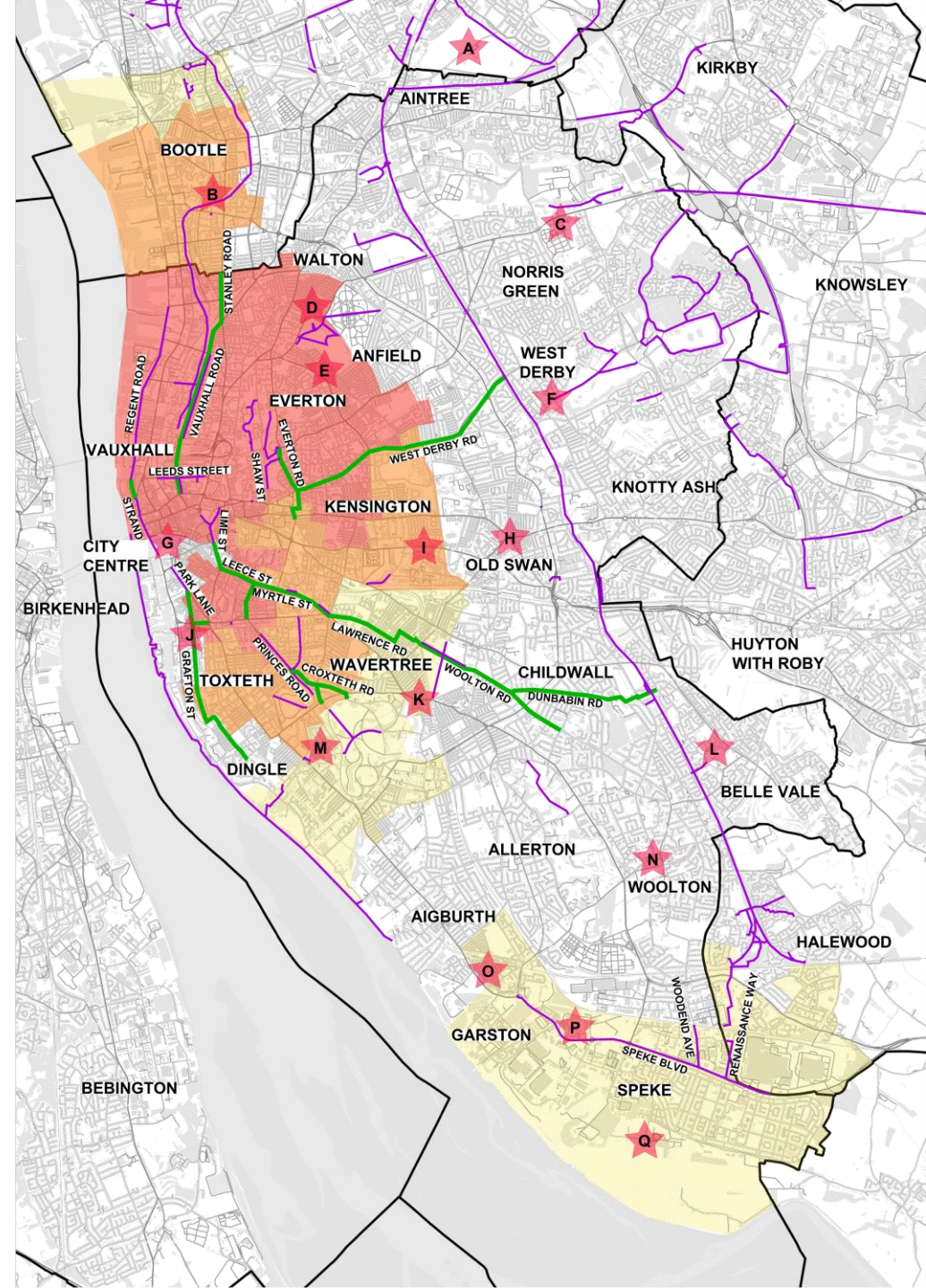
AREAS WHERE 50.0% OR  
HIGHER OF HOUSEHOLDS  
OWN NO CARS OR VANS IN  
2021 CENSUS

AREAS OF CENSUS OVERLAP

CONSULTATION APPROVED  
SCHEMES

## EXAMPLE OF KEY INTEREST POINTS

- A. AINTREE RACECOURSE
- B. BOOTLE NEW STRAND
- C. STONEDALE RETAIL PARK
- D. GOODISON PARK
- E. ANFIELD
- F. WEST DERBY VILLAGE
- G. LIVERPOOL ONE
- H. OLD SWAN
- I. EDGE LANE
- J. BALTIC TRIANGLE
- K. ALLERTON & SMITHDOWN
- L. BELLE VALE SHOPPING CENTRE
- M. LARK LANE
- N. WOOLTON VILLAGE
- O. GARSTON
- P. NEW MERSEY RETAIL PARK
- Q. JOHN LENNON AIRPORT



Liverpool  
City Council



LIVERPOOL  
CITY REGION  
COMBINED AUTHORITY

METROMAYOR  
LIVERPOOL CITY REGION



# "Mini Holland" Area

## KEY

EXISTING TRAFFIC FREE AND  
SEGREGATED CYCLE ROUTES

EXAMPLE OF KEY INTEREST  
POINTS

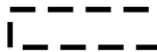
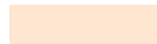
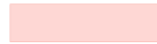
AREAS WHERE 3.0% OR  
HIGHER OF PEOPLE AGED 16  
AND OVER TRAVEL TO WORK  
BY BICYCLE IN 2021 CENSUS

AREAS WHERE 50.0% OR  
HIGHER OF HOUSEHOLDS  
OWN NO CARS OR VANS IN  
2021 CENSUS

AREAS OF CENSUS OVERLAP

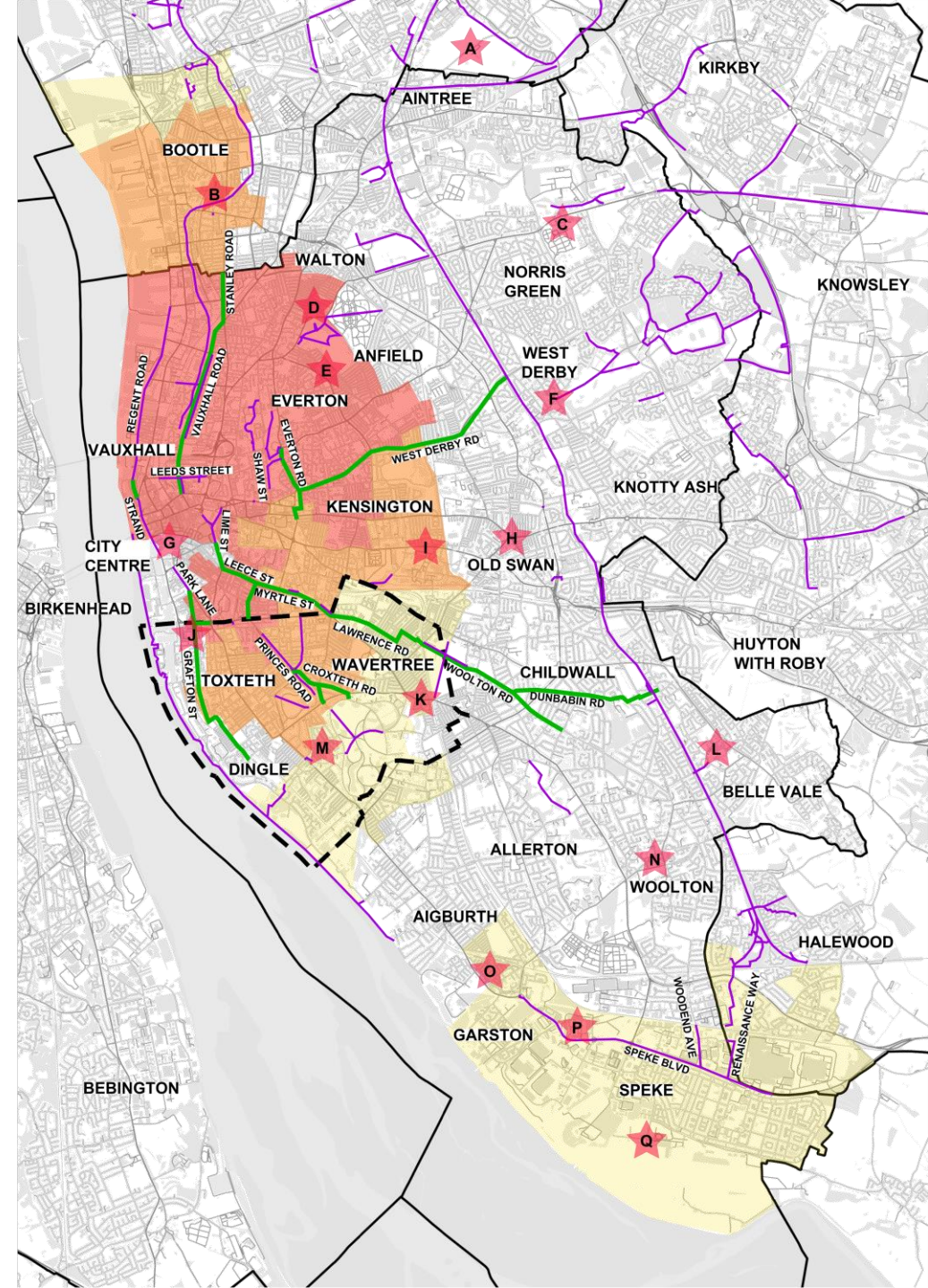
CONSULTATION APPROVED  
SCHEMES

PROPOSED "MINI HOLLAND"



## EXAMPLE OF KEY INTEREST POINTS

- A. AINTREE RACECOURSE
- B. BOOTLE NEW STRAND
- C. STONEDALE RETAIL PARK
- D. GOODISON PARK
- E. ANFIELD
- F. WEST DERBY VILLAGE
- G. LIVERPOOL ONE
- H. OLD SWAN
- I. EDGE LANE
- J. BALTIC TRIANGLE
- K. ALLERTON & SMITHDOWN
- L. BELLE VALE SHOPPING CENTRE
- M. LARK LANE
- N. WOOLTON VILLAGE
- O. GARSTON
- P. NEW MERSEY RETAIL PARK
- Q. JOHN LENNON AIRPORT



Liverpool  
City Council



LIVERPOOL  
CITY REGION  
COMBINED AUTHORITY

METROMAYOR  
LIVERPOOL CITY REGION



# 5 Year Cycle Collisions – Serious & Fatal

**22 km** of pipeline schemes  
**KEY**

EXISTING TRAFFIC FREE AND  
SEGREGATED CYCLE ROUTES

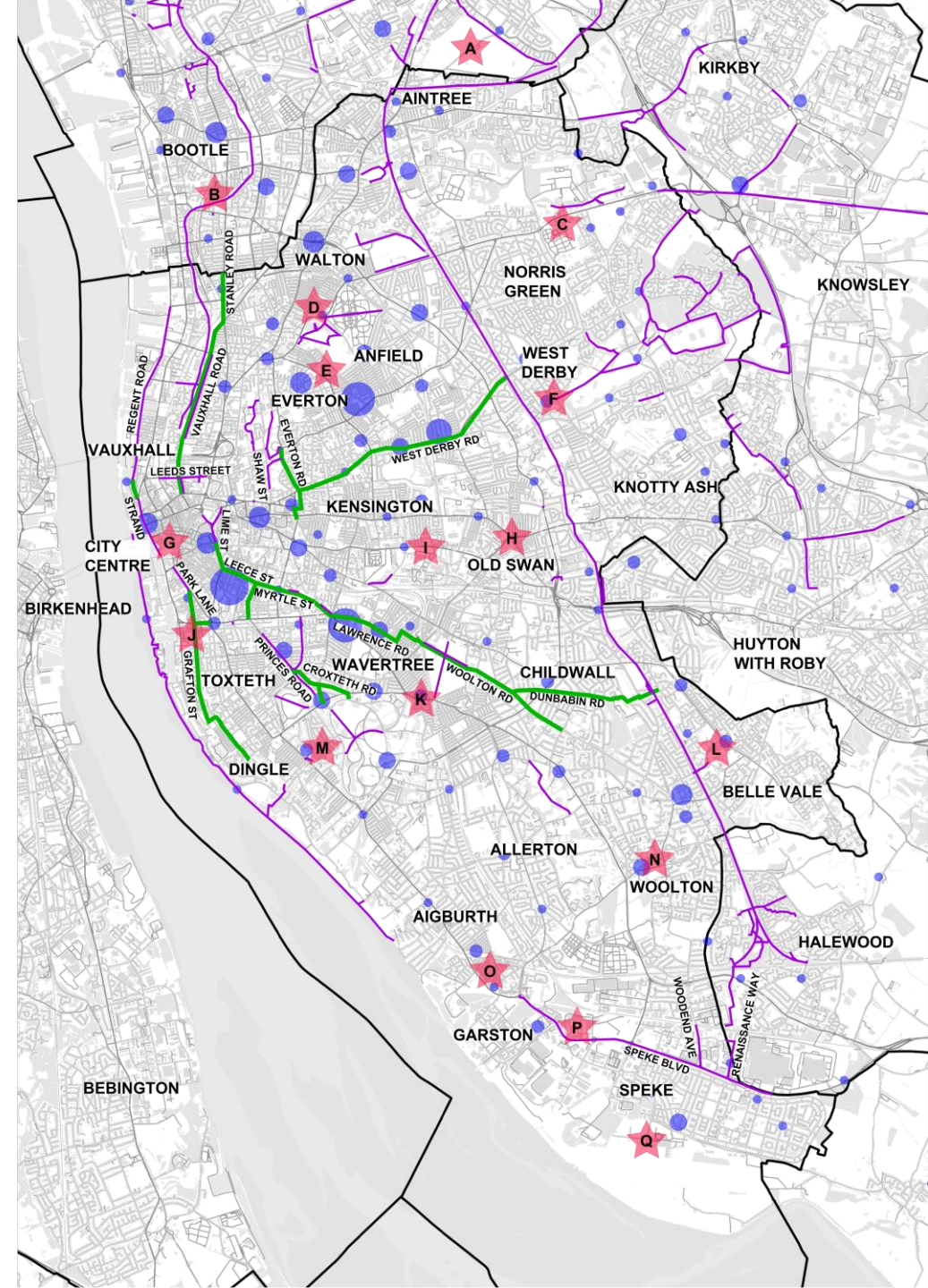
EXAMPLE OF KEY INTEREST  
POINTS

CONSULTATION APPROVED  
SCHEMES

CYCLE COLLISION HOT SPOTS

## EXAMPLE OF KEY INTEREST POINTS

- A. AINTREE RACECOURSE
- B. BOOTLE NEW STRAND
- C. STONEDALE RETAIL PARK
- D. GOODISON PARK
- E. ANFIELD
- F. WEST DERBY VILLAGE
- G. LIVERPOOL ONE
- H. OLD SWAN
- I. EDGE LANE
- J. BALTIC TRIANGLE
- K. ALLERTON & SMITHDOWN
- L. BELLE VALE SHOPPING CENTRE
- M. LARK LANE
- N. WOOLTON VILLAGE
- O. GARSTON
- P. NEW MERSEY RETAIL PARK
- Q. JOHN LENNON AIRPORT



Liverpool  
City Council



LIVERPOOL  
CITY REGION  
COMBINED AUTHORITY

METROMAYOR  
LIVERPOOL CITY REGION



# Highest Pollutant Areas

**22 km** of pipeline schemes  
**KEY**

EXISTING TRAFFIC FREE AND  
SEGREGATED CYCLE ROUTES

EXAMPLE OF KEY INTEREST  
POINTS

CONSULTATION APPROVED  
SCHEMES

POLLUTANT AREAS WITHIN  
10% OF ANNUAL MEAN  
OBJECTIVE OR EXCEEDING



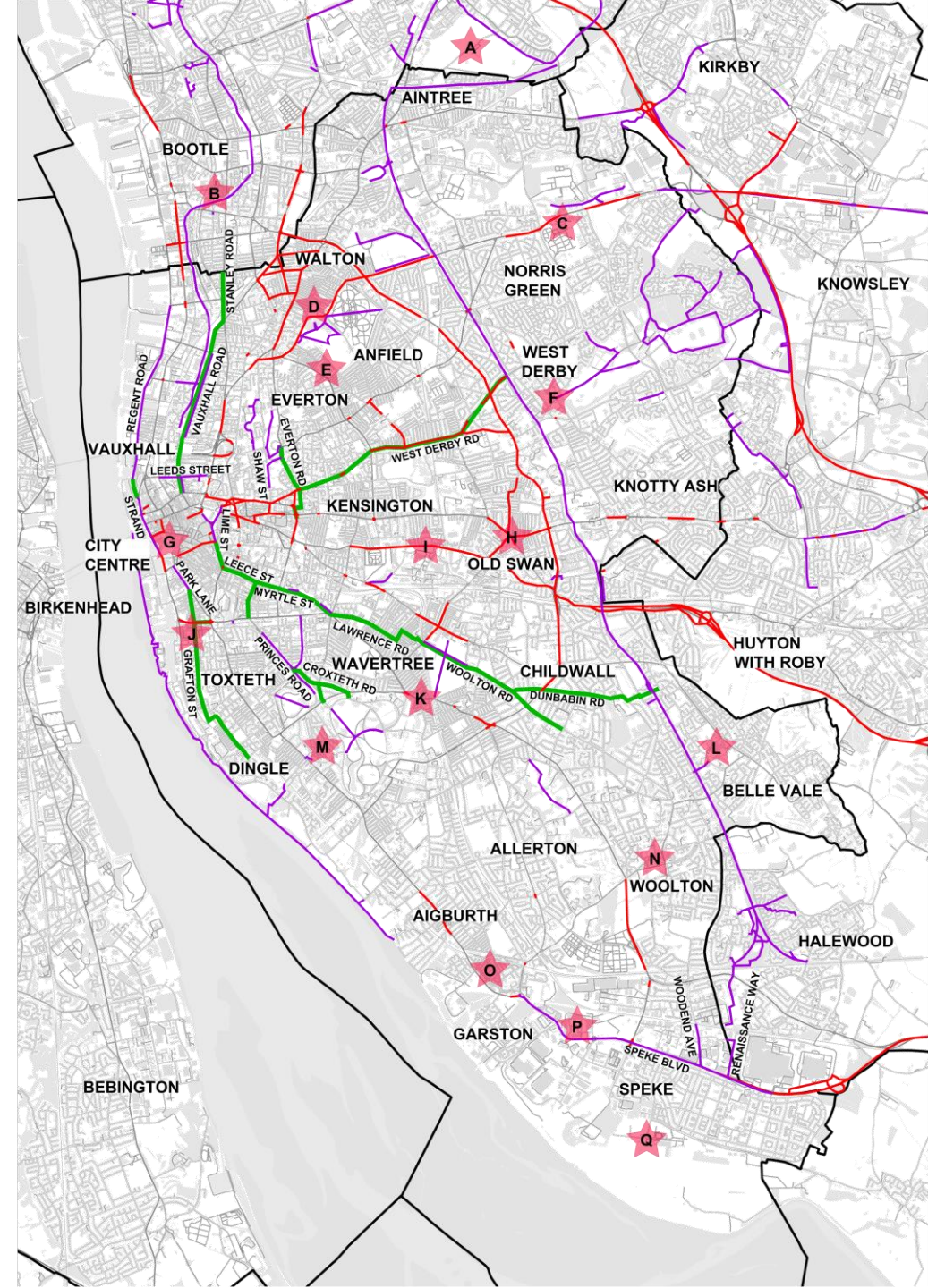
Liverpool  
City Council

LIVERPOOL  
CITY REGION  
COMBINED AUTHORITY

METROMAYOR  
LIVERPOOL CITY REGION

## EXAMPLE OF KEY INTEREST POINTS

- A. AINTREE RACECOURSE
- B. BOOTLE NEW STRAND
- C. STONEDALE RETAIL PARK
- D. GOODISON PARK
- E. ANFIELD
- F. WEST DERBY VILLAGE
- G. LIVERPOOL ONE
- H. OLD SWAN
- I. EDGE LANE
- J. BALTIC TRIANGLE
- K. ALLERTON & SMITHDOWN
- L. BELLE VALE SHOPPING CENTRE
- M. LARK LANE
- N. WOOLTON VILLAGE
- O. GARSTON
- P. NEW MERSEY RETAIL PARK
- Q. JOHN LENNON AIRPORT





# Cycle Network Base Overview

**116 km** of existing high-quality infrastructure

**22 km** of pipeline schemes

**138 km** of high-quality infrastructure



Liverpool  
City Council



LIVERPOOL  
CITY REGION  
COMBINED AUTHORITY

METROMAYOR  
LIVERPOOL CITY REGION





# Inner City Missing Links

**116 km** of existing high-quality infrastructure

**22 km** of pipeline schemes

**13 km** of inner city missing links

**151 km** of high-quality infrastructure

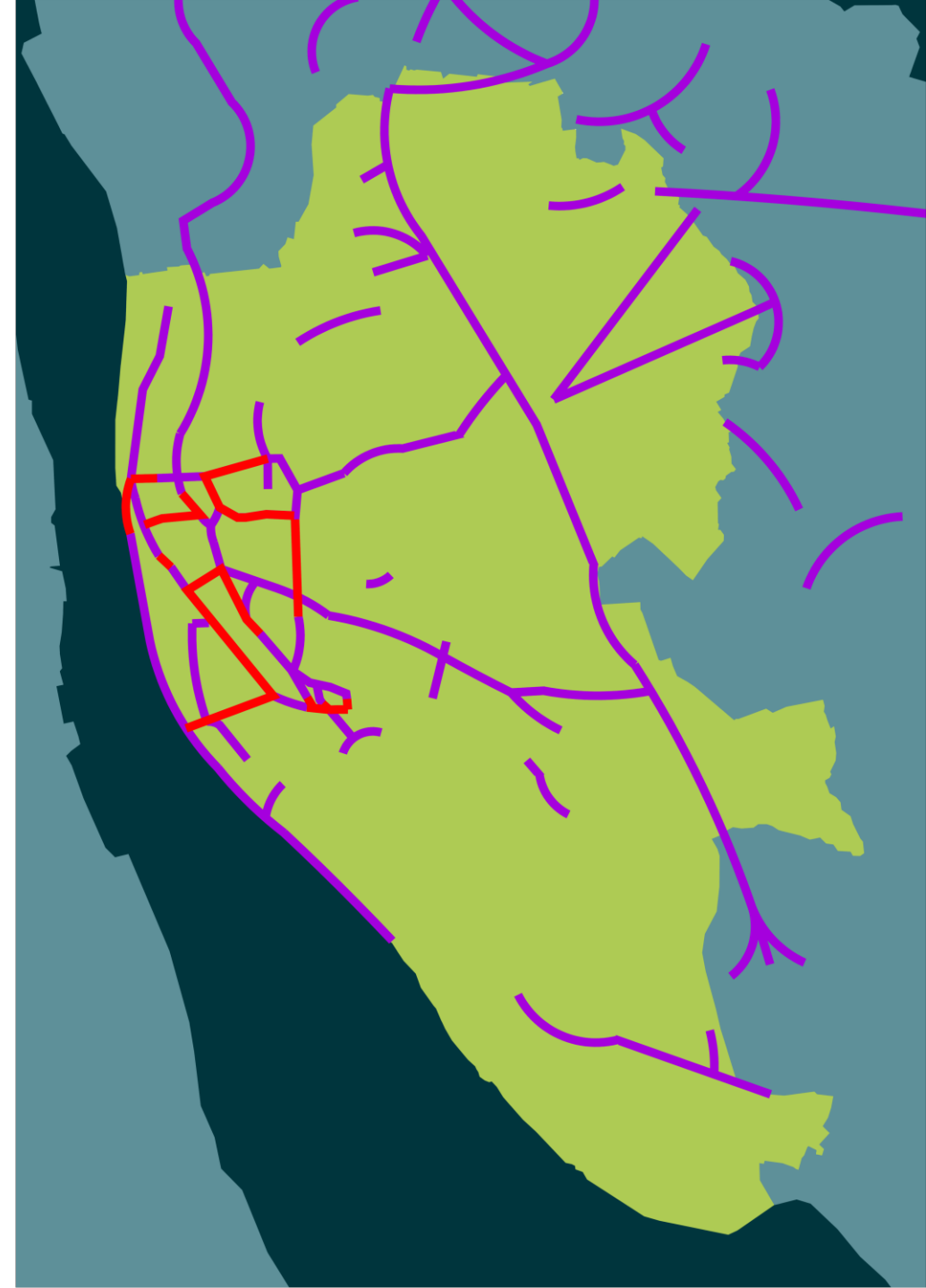


Liverpool  
City Council



LIVERPOOL  
CITY REGION  
COMBINED AUTHORITY

METROMAYOR  
LIVERPOOL CITY REGION





# Outer City Missing Links

116 km of existing high-quality infrastructure

22 km of pipeline schemes

13 km of inner city missing links

46 km of outer city missing links

**197 km** of high-quality infrastructure

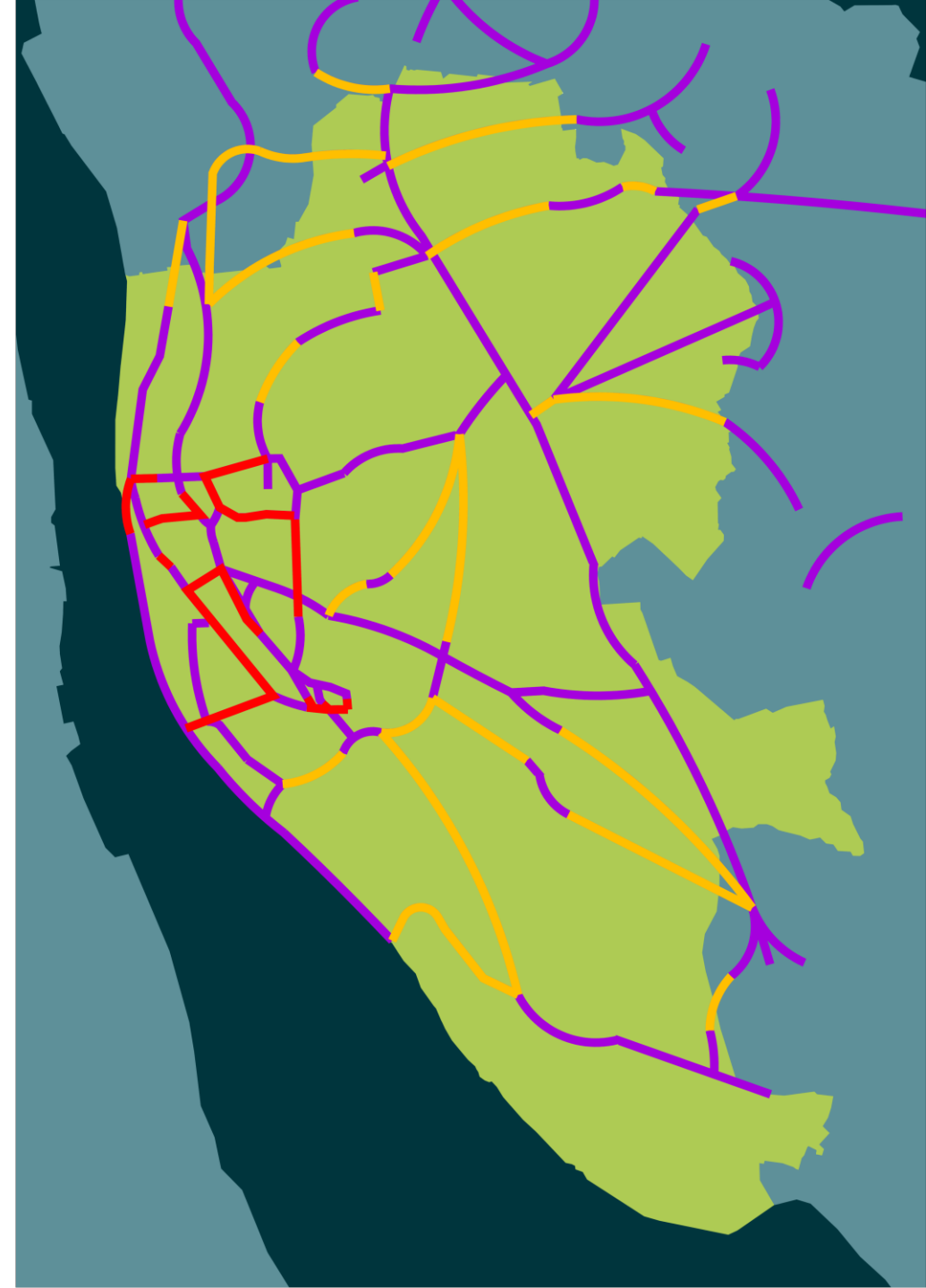


Liverpool  
City Council



LIVERPOOL  
CITY REGION  
COMBINED AUTHORITY

METROMAYOR  
LIVERPOOL CITY REGION





# A Well-Connected City For People

**116 km** of existing high-quality infrastructure

**22 km** of pipeline schemes

**13 km** of inner city missing links

**46 km** of outer city missing links

**197 km** of high-quality infrastructure

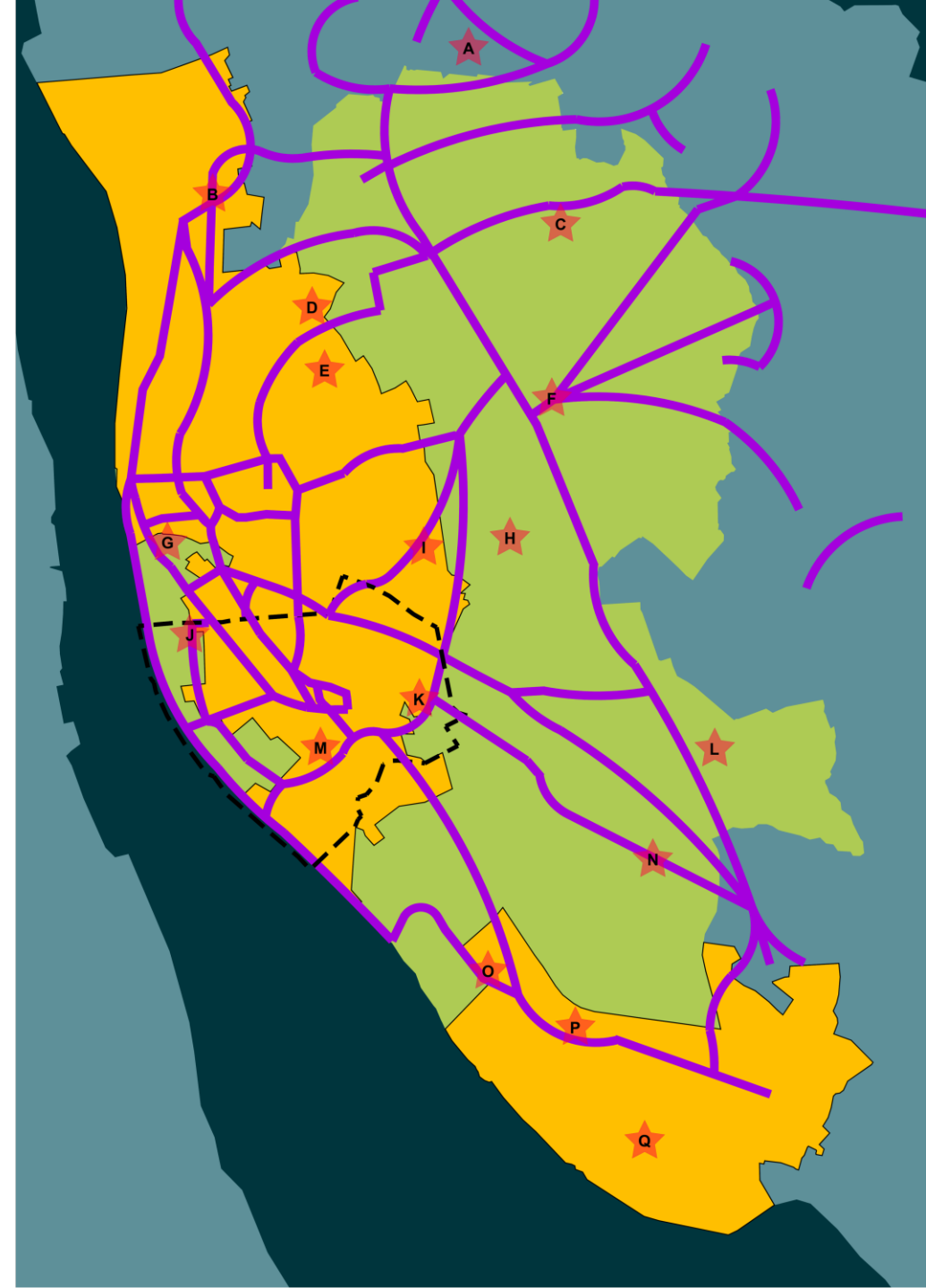


Liverpool  
City Council



LIVERPOOL  
CITY REGION  
COMBINED AUTHORITY

METROMAYOR  
LIVERPOOL CITY REGION





# Connecting Liverpool City Region



Liverpool  
City Council



**LIVERPOOL  
CITY REGION**  
COMBINED AUTHORITY

**METROMAYOR**  
LIVERPOOL CITY REGION





Liverpool  
City Council



**LIVERPOOL  
CITY REGION**  
COMBINED AUTHORITY

**METRO MAYOR**  
LIVERPOOL CITY REGION

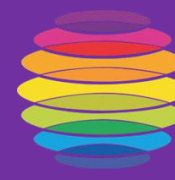
# A Vision For Liverpool

“A Supercharged Agenda Delivered at Pace”

# A Supercharged City



Liverpool  
City Council



LIVERPOOL  
CITY REGION  
COMBINED AUTHORITY

METRO MAYOR  
LIVERPOOL CITY REGION



## Climate emergency

Carbon zero goal, improved air quality and reduced congestion



## A well connected city

Inclusive, accessible and affordable travel



## An inclusive city

Improving the social factor by providing new connections to communities and opportunities



## An economic boost

Affordable, quality alternative to car travel, targeted to where needed most



## A healthier city

Modal shift towards healthier travel choices for work and leisure



## A safer city

Safer roads for cyclists, walkers and all forms of active travel



## Construction Playbook

Build back better, faster and greener



## An innovative city

An attractive city to live, work and relax with world class active travel facilities putting people first





# A Supercharged Carbon Agenda



Liverpool  
City Council



LIVERPOOL  
CITY REGION  
COMBINED AUTHORITY

METRO MAYOR  
LIVERPOOL CITY REGION

**“Make no mistake, this is our moment. I want others to look to the Liverpool city region as the exemplar when it comes to tackling climate change.”** – Steve Rotheram COP26 Glasgow



Liverpool City Net Zero Carbon 2030

10 years ahead of LCRCA

20 years ahead of the national position

Aim 1 - reduce travel demand

Aim 2 - modal shift through active travel

**75%** of the city's region's energy needs are from fossil fuels, including diesel and petrol.

**65%** of transport emissions or from cars

**50%** of journeys in towns and cities to be **active**  
and for remaining cars to be **electric**.

*“My mayoral ambition is to create a fairer, greener, and brighter **low carbon future** for the people of Liverpool”*

Mayor Joanne Anderson - Liverpool NZC30 Plan

*“It is my ambition for our region to be at the forefront of the **green industrial revolution**, leading the charge towards **net zero**, and taking advantage of the myriad of jobs, investment and opportunities that it provides”.*

Metro Mayor Steve Rotheram - LCRCA 19<sup>th</sup> October 2021

*“Climate change is the defining **crisis** of our time and it is happening even more quickly than we feared. But we are far from powerless. **“This is a race that we can win.”**”*

United Nations Secretary-General - António Guterres

# Immediate Next Steps – The 1 year plan

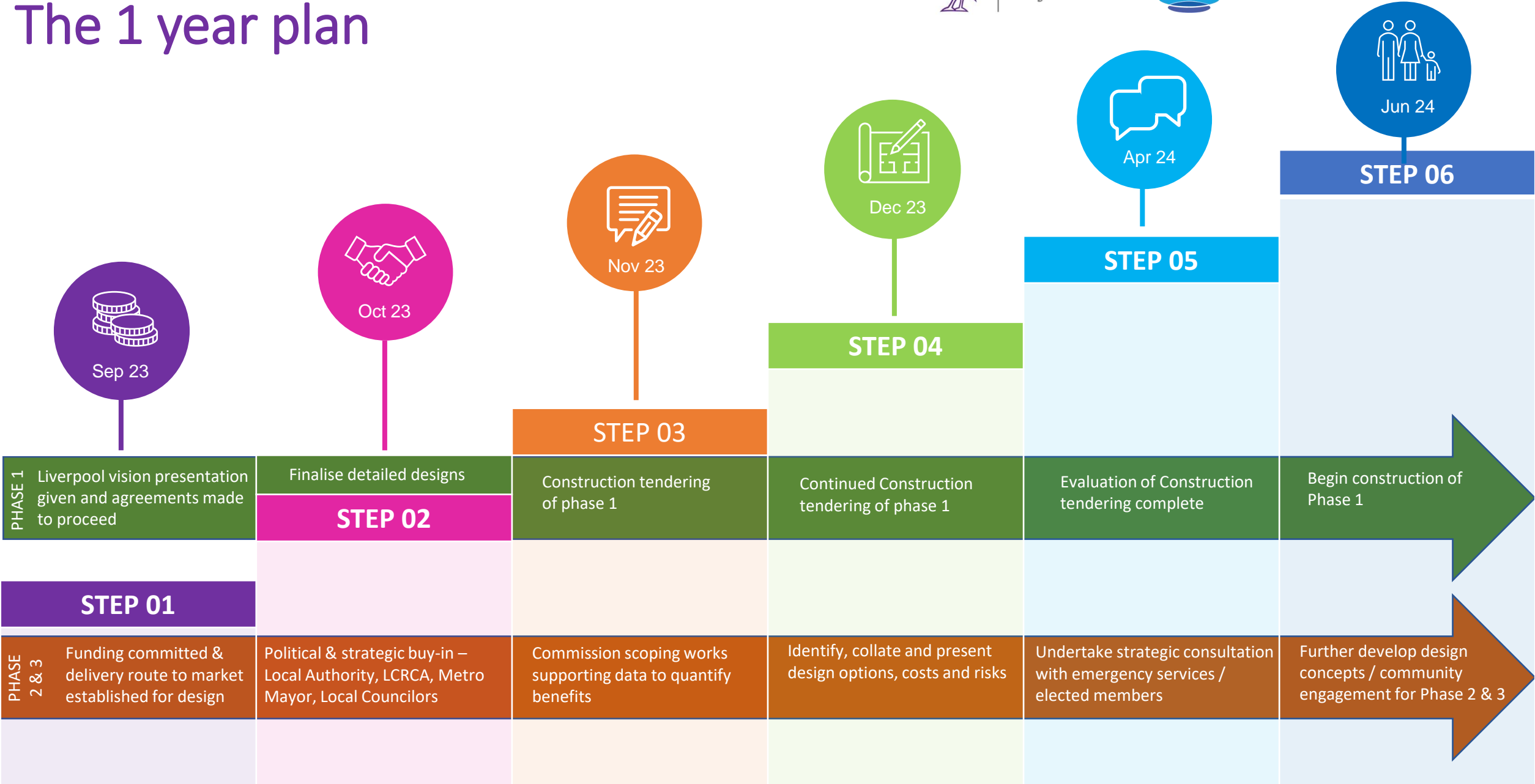


Liverpool  
City Council



LIVERPOOL  
CITY REGION  
COMBINED AUTHORITY

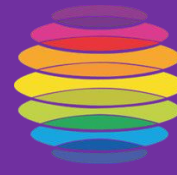
METROMAYOR  
LIVERPOOL CITY REGION







Liverpool  
City Council



**LIVERPOOL  
CITY REGION**  
COMBINED AUTHORITY

**METRO MAYOR**  
LIVERPOOL CITY REGION

# The A Lines Summary

# Plan A Line

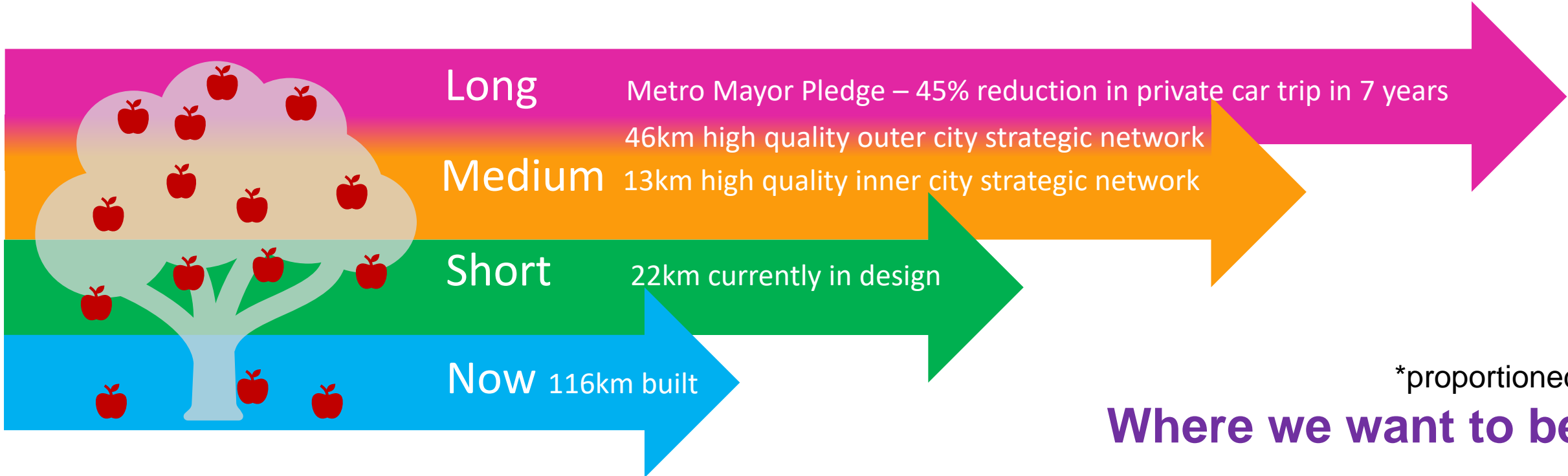
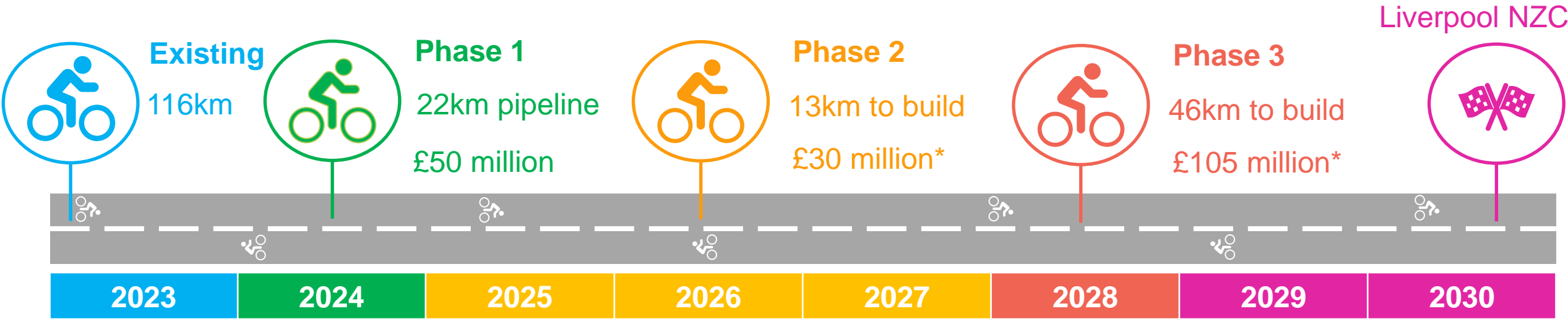


Liverpool City Council



LIVERPOOL CITY REGION  
COMBINED AUTHORITY

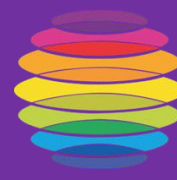
METROMAYOR  
LIVERPOOL CITY REGION







Liverpool  
City Council



**LIVERPOOL  
CITY REGION**  
COMBINED AUTHORITY

**METRO MAYOR**  
LIVERPOOL CITY REGION

# Questions & Answers